



11 Drayton Place  
Southampton

£1,100 Per month

A lovely one-bedroom house situated in a popular area of Totton, offering well-presented accommodation throughout, one allocated parking space and a low-maintenance garden. To rent this property, applicants will need a household income of at least £33,000. The total deposit required is £1,269.00, with a holding deposit of £253.00.



- Situated in a lovely residential area of Totton • Gas Central Heating • Council Tax Band B • Bedroom Currently Being Redecorated • Low Maintenance Garden • One Allocated Parking Space

Upon entering the property, you are welcomed into a bright and well-presented living area, offering a comfortable and practical living space with access to the staircase leading to the first floor.

To the rear of the ground floor is the fitted kitchen, featuring a range of wall and base units with worktop space, a built-in breakfast bench, washing machine and dishwasher.

Upstairs, the property offers a well-proportioned double bedroom with built-in storage, creating a comfortable and practical living space. The bathroom is fitted with a shower, wash basin and WC, with an additional storage cupboard located off the landing.

Externally, the property benefits from a low-maintenance garden and one allocated parking space. Situated in a desirable residential area of Totton, the home is conveniently located close to local amenities and transport links.

The property's construction is brick and tile.

The property has Gas central heating, mains water and mains drainage.

The broadband and mobile availability can be checked via the Ofcom's "broadband and mobile coverage checker" on their website.

#### ADDITIONAL INFORMATION

Council Tax Band: B

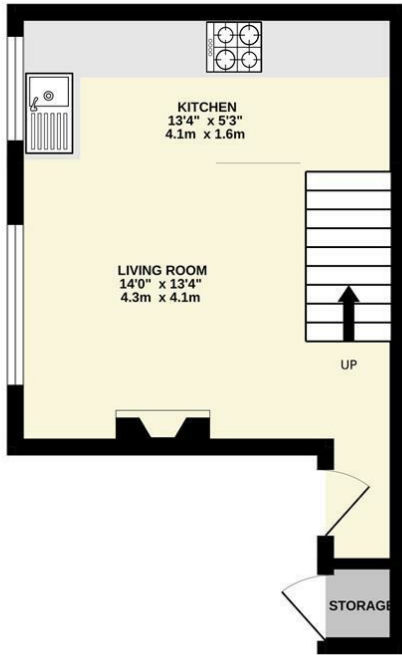
Furnishing Type: Unfurnished

Security Deposit: £1,269

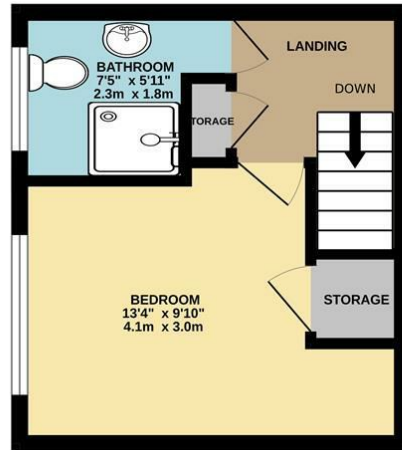
Available From: 25th May 2026



GROUND FLOOR  
217 sq.ft. (20.2 sq.m.) approx.



1ST FLOOR  
201 sq.ft. (18.7 sq.m.) approx.



TOTAL FLOOR AREA : 419 sq.ft. (38.9 sq.m.) approx.

Whilst every attempt has been made to ensure the accuracy of the floorplan contained here, measurements of doors, windows, rooms and any other items are approximate and no responsibility is taken for any error, omission or mis-statement. This plan is for illustrative purposes only and should be used as such by any prospective purchaser. The services, systems and appliances shown have not been tested and no guarantee as to their operability or efficiency can be given.  
Made with Metropix ©2026



### Energy Efficiency Rating

	Current	Potential
Very energy efficient - lower running costs		
(92 plus) <b>A</b>		
(81-91) <b>B</b>		<b>90</b>
(69-80) <b>C</b>	<b>73</b>	
(55-68) <b>D</b>		
(39-54) <b>E</b>		
(21-38) <b>F</b>		
(1-20) <b>G</b>		
Not energy efficient - higher running costs		
<b>England &amp; Wales</b>	EU Directive 2002/91/EC	

Agents Note: Whilst every care has been taken to prepare these particulars, they are for guidance purposes only. All measurements are approximate and are for general guidance purposes only and whilst every care has been taken to ensure their accuracy, they should not be relied upon and potential buyers/tenants are advised to recheck the measurements.



# SPENCERS

LETTINGS

## ABOUT US

As the leading independent letting agency in the New Forest and surrounding areas, Spencers offers tenants a friendly, reliable and highly knowledgeable service. With offices across the region, including Lymington, Highcliffe, Brockenhurst, Burley, Ringwood, and Romsey, our local teams are here to help you find the right home and support you throughout your tenancy.

Our lettings teams live and work within the Forest and its nearby towns. This means you benefit from genuine local insight from nearby schools and transport links to community life and coastal or countryside surroundings.

We work closely with our landlords and manage a wide range of homes across the Forest and surrounding towns. We have memberships with Safe Agent, the Property Ombudsmen, and the Tenancy Deposit Scheme (TDS) ensuring your tenancy is handled professionally, transparently and with your best interests in mind.

Please contact us on the below:

Lymington 01794 331433

Romsey 01794 331433

Wimborne: 01202 842248

[lettings@spencersproperty.co.uk](mailto:lettings@spencersproperty.co.uk)

[www.spencersproperty.com](http://www.spencersproperty.com)

